

There is no system, just individual units, individual stars in the sky.

Only an astronomer with a telescope could look at it and see a solar system.

...Dr. Trachtenberg, Former President,
George Washington University

Crisis of Confidence Threatens Colleges. Karin Fishcer. **Chronicle of Higher Education, May 20, 2011**

A Brief Overview of U.S. Higher Education

**NAFSA Annual Conference
May 2015**

Gregg Glover

*Associate Director, Development and Alumni Relations,
Emerson College*

Linda Tobash

International Higher Education Consultant

There is no system, just individual units, individual stars in the sky.

Only an astronomer with a telescope could look at it and see a solar system.

...Dr. Trachtenberg, Former President,
George Washington University

Crisis of Confidence Threatens Colleges. Karin Fishcer. **Chronicle of Higher Education, May 20, 2011**

U.S. Higher Education System

Decentralized with limited government control

U.S. Higher Education System

Key Philosophical Beliefs

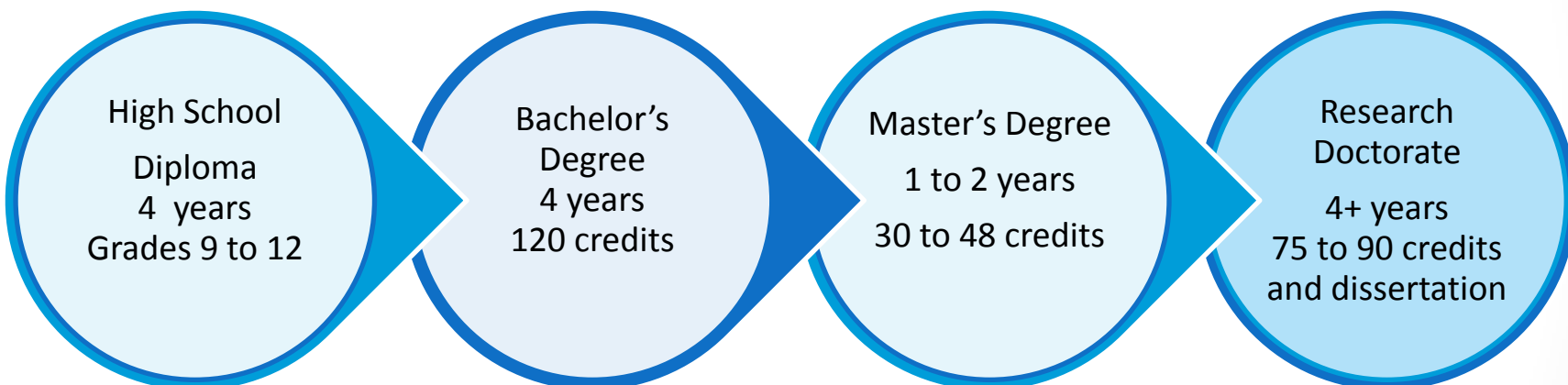
Belief in limited government and freedom of expression

Belief in capitalism and rationality of markets

Belief in equal opportunity and social mobility

Belief in value of general education at the undergraduate level

Academic Education Progression



A horizontal flow diagram showing the progression of academic education. It consists of four light blue circles with dark blue borders, connected by dark blue triangular arrows pointing from left to right. Each circle contains text describing a stage of education: High School, Bachelor's Degree, Master's Degree, and Research Doctorate. The text includes the type of diploma/degree, the duration in years, and the number of credits or requirements.

High School
Diploma
4 years
Grades 9 to 12

Bachelor's
Degree
4 years
120 credits

Master's Degree
1 to 2 years
30 to 48 credits

Research
Doctorate
4+ years
75 to 90 credits
and dissertation

U.S. Grading Scale

Most common grading scale in the U.S. is the 0 – 4 / A – F scale

4 = A

3 = B

2 = C

1 = D (U.S. concept)

0 = F (failure — sometimes called E)

Credits, semesters, and degree equivalency

- **What is full-time study?**

- 15 semester hours of credit for undergraduates
- 9-12 semester hours of credit for graduates
 - A typical course is 3 to 4 semester credit hours
 - A typical undergraduate student takes 4 to 5 courses per semester

- **What is a semester?**

- Typically 15 weeks of attendance of classroom instruction -- beginning in August/September and ending in May/June
- two semesters per year
 - other calendars exist

- **What is a credit hour (semester credit)?**

- theory course: 1 credit = 50 minutes of contact per week for one semester (15 weeks), plus preparation time including library research, reading, homework, etc. at 2 to 3 hours per week
- laboratory, practical or studio course: 1 credit = two to four 50 minutes of contact per week for one semester

Prepared by Margit Schatzman, Education Credential Evaluators

"Pluralism" in the types of institutions considered a strength of the system



THE UNIVERSITY
of
WISCONSIN
MADISON



STANFORD
UNIVERSITY



THE UNIVERSITY OF ARIZONA®

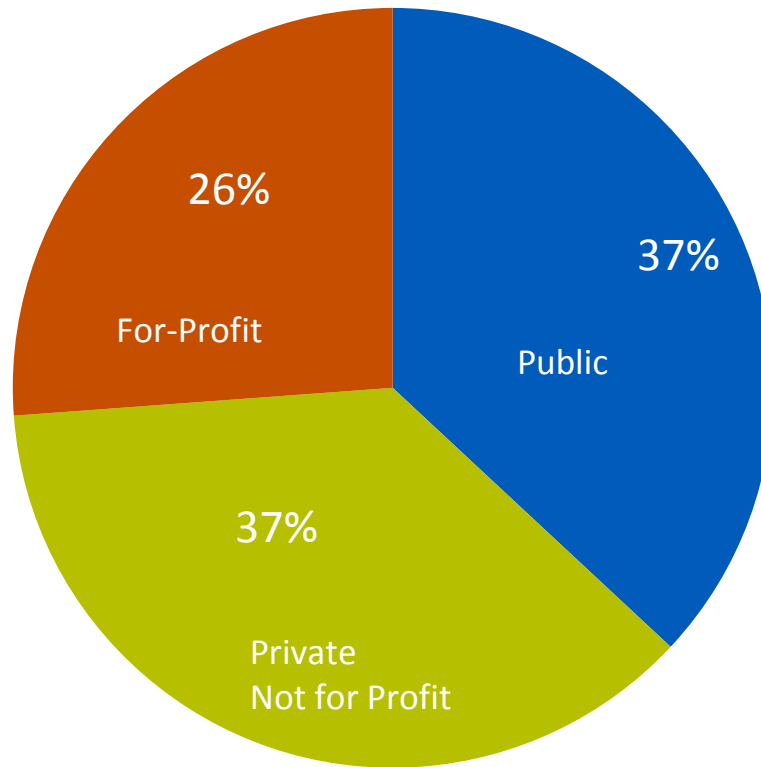


THE UNIVERSITY OF
TEXAS
— AT AUSTIN —



KEY FACTS

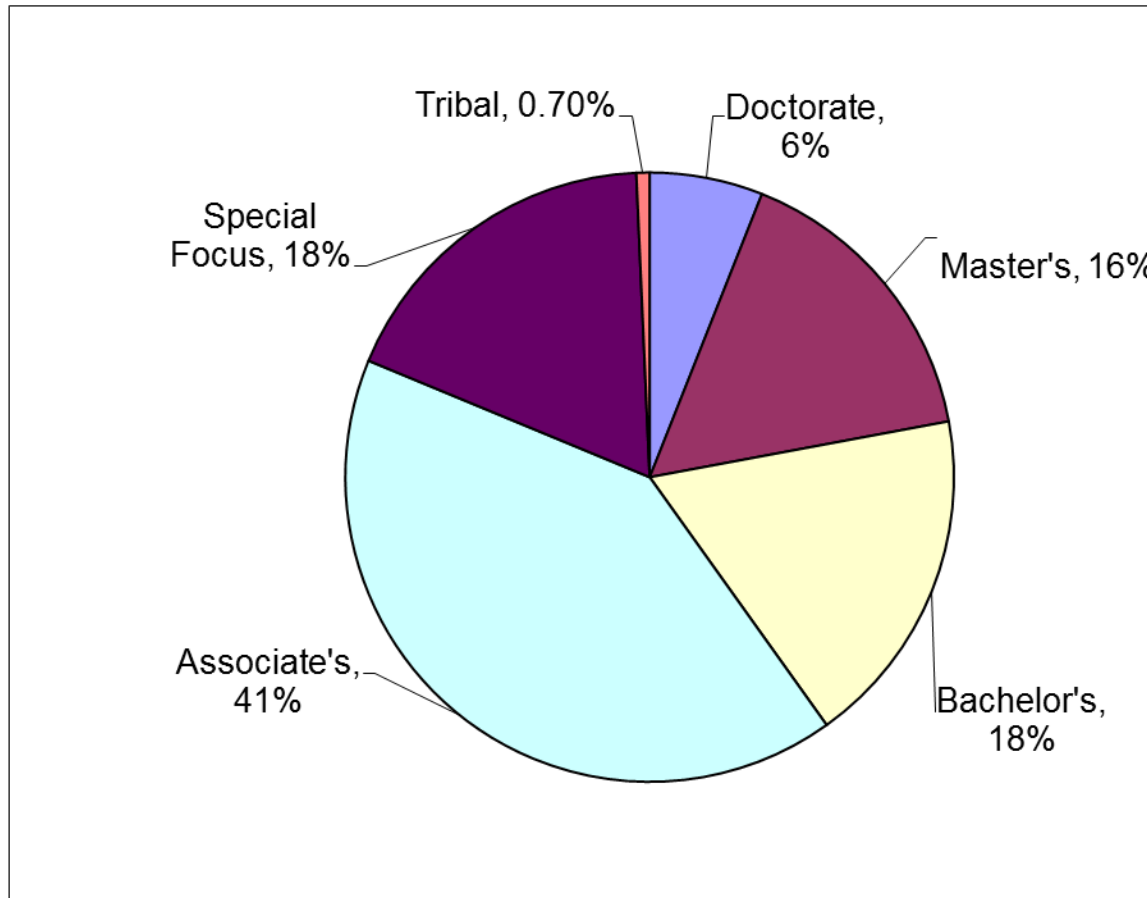
4,635 Accredited Degree-Granting Institutions



Sources: 2015 Carnegie Classification;

Breakdown by Carnegie Classification

Percentage of Institutions



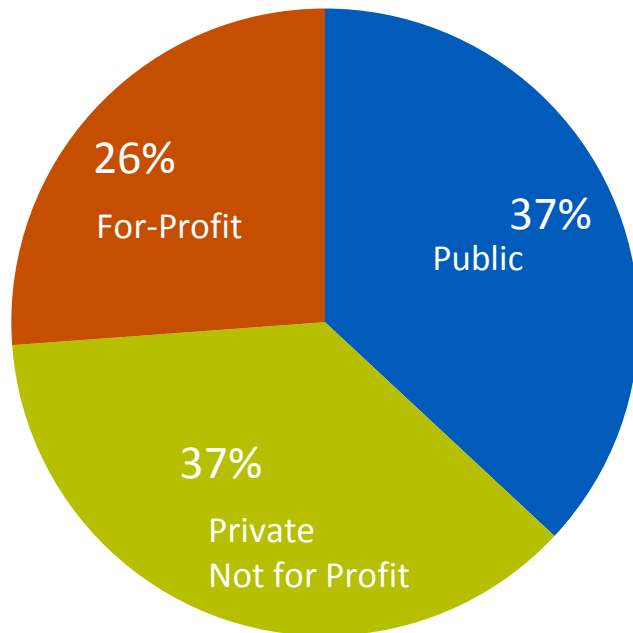
Number of Institutions

Doctorate	297
Master's	724
Baccalaureate	810
Associate's	1,919
Special Focus	853
Tribal	32

Source: 2015 Carnegie Classification
<http://carnegieclassifications.iu.edu>

KEY FACTS

4,635 Accredited
Degree-Granting
Institutions



Sources: 2015 Carnegie Classification

Students

- ✚ Over 21 million estimated in 2013-2014 academic year
 - 43% male & 57% female
 - 4.2% international
 - 866,000
 - 72% enroll in public institutions

✚ 86% undergraduate level

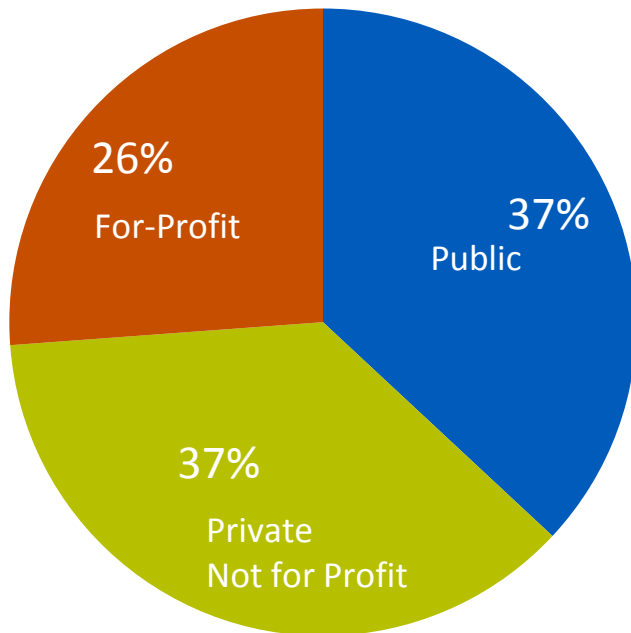
✚ 14% graduate level

--U.S. Department of Education
Institute of Education Services
National Center for Educational Statistics
Digest of Education Statistics – 2014

--Open Doors- Report on International
Education Exchange 2014

KEY FACTS

4,635 Accredited
Degree-Granting
Institutions



Sources: 2015 Carnegie Classification

Students

- Over 21 million estimated in 2013-2014 academic year
 - 43% male & 57% female
 - 4.2% international
 - 866,000
 - 72% enroll in public institutions
- 86% undergraduate level
 - 7.6 million associate's
 - 10.6 million bachelor's
- 14% graduate level
 - 2.9 million graduate

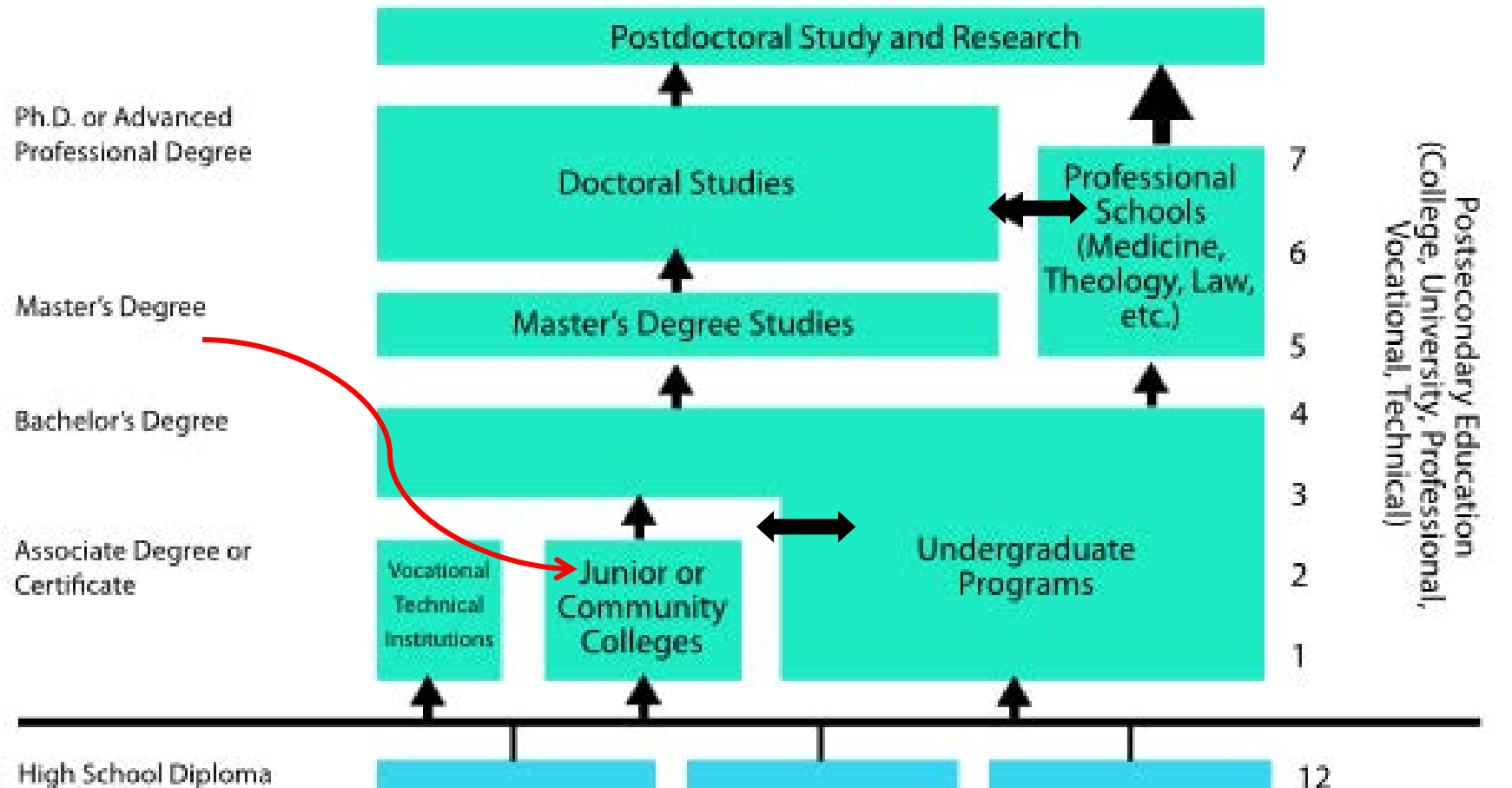
--U.S. Department of Education
Institute of Education Services

National Center for Educational Statistics
Digest of Education Statistics – 2014

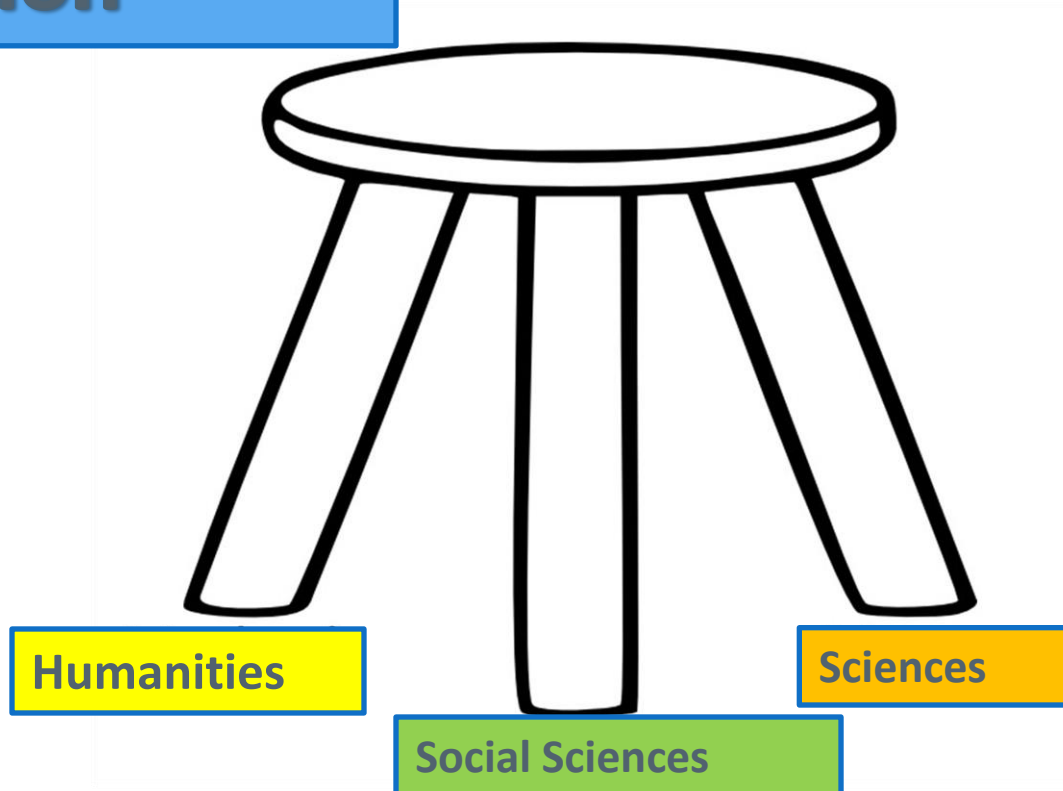
--Open Doors- Report on International Education Exchange
2014

Structure of U.S. Higher Education

Adapted from U.S. Department of Education Source, National Center for Education Statistics



General/Liberal Education



Governance



Who is in charge at the institutional level?

Shared by many players

- The Governing Board
- **The President -- ‘The Living Logo’**
 - “the Administration”
- The Faculty
- The Students
- External Audiences
 - alumni
 - donors
 - parents



PRESIDENT

Administrative
Coordinator

Director for
Institutional
Events

Assistant Vice President /
Secretary of the College

College
Council

Faculty

Student
Senate

Staff Council Rep-
resentatives (SCR)

**Vice President for
Academic Affairs/Dean of
Faculty**

Assistant to the VP
Associate Deans (3)
Asst VP, Study Abroad &
International Programs
Director, Institutional Re-
search & Assessment
Registrar
Director, Community Engage-
ment Center
Director, Pitzer in Ontario
Program
Director/Curator, Pitzer Art
Galleries
Interim Director, Writing Cntr
Academic Director, Intercoll.
Media Studies Program
Academic Director, Intercolle-
giate Neuroscience Program
Academic Director, Vaccine
Research Center

**Vice President for
Administration/
Treasurer**

Exec Asst to VP
Assoc. VP, Admini-
stration/Associate
Treasurer
Senior Financial
Analyst
Asst. VP, Campus
Facilities
Asst. Director,
Maintenance Ops
& Constructions
Manager, Arbore-
tum/Grounds
Manager, Custo-
dial Services
Director, Human
Resources
Director, Informa-
tion Technology
Duplicating Super-
visor

**Vice President for College
Advancement**

Exec Asst to VP
Associate Vice President
Assistant VP/Campaign
Director
Office Manager
Director, Advancement
Services
Director, Alumni Relations
Director, Annual Giving
Director, Foundation &
Corporate Relations
Director, Parent Relations
Major Gifts Officer
Prospect Research
Manager

**Vice President for
Student Affairs**

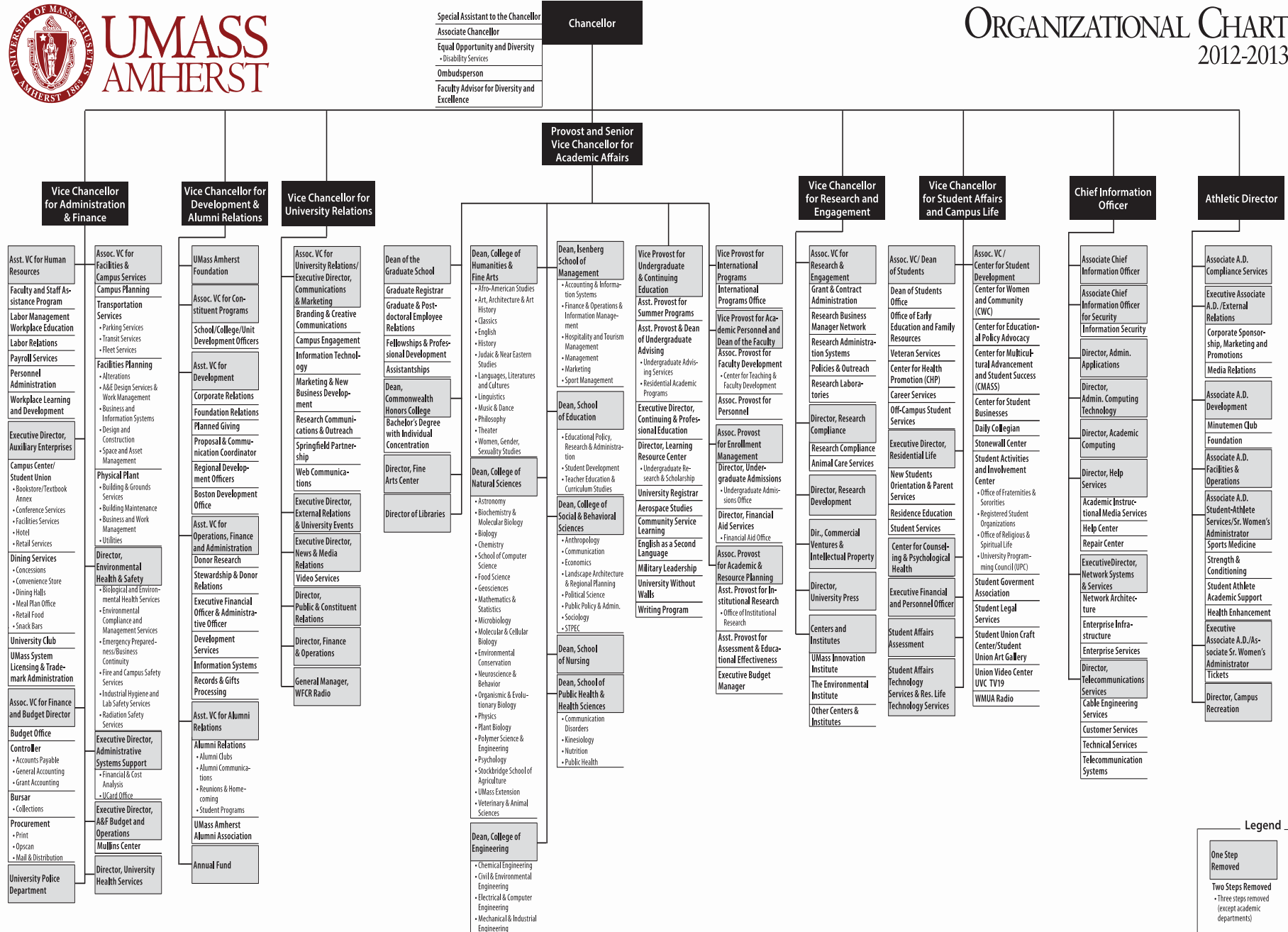
Assistant to the VP
Dean of Students
Associate Dean
Assistant Dean
Residence Directors
(3)
Director, Career Ser-
vices
Director, CAPAS
Coord, Substance
Abuse Education &
Outreach
Manager, Dining
Services
(Bon Appetit)
Manager, Grove
House
Mailroom Supervisor

**Vice President for
Admission/
Financial Aid**

Exec Asst to VP
Director,
Admission
Operations
Manager
Director,
Financial Aid

**Vice President
for Public Rela-
tions**

Director,
Communications
Web Architect
Graphic Designers
(2)
Public Relations
Coord/Web
Designer
Videographer
Manager,
Instructional
Services
Production Mgr,
Benson Auditorium
Production Coord,
Benson Auditorium



Legend

One Step Removed

Two Steps Removed
• Three steps removed (except academic departments)

Decentralized Sources of Income 2011-12

Fund Income	Public	Private (not-for-profit)
Tuition and Fees	21%	39%
Federal Government	17%	15%
State Government	21%	1%
Local Government	6.5%	
Private Gifts, Grants & Contracts	3.5%	13.5%
Investment Income (returns)	2%	3%
Sales & Aux. Srvcs & Other	7.5%	9.5%
Hospitals	11%	11.5%
Other	10.5%	7.5%

Quality Assurance

Accreditation is a trust-based, standards-based, evidence-based, judgment-based, peer-based voluntary process.

No formal governmental body that oversees the process.

Taken from *An Overview of U.S. Accreditation* by Judith S. Eaton. Council on Higher Education Accreditation (CHEA). May 2009

Accreditation: Two Types

Institutional Accreditation

- Regional Accrediting Agencies
- National Accrediting Agencies

Programmatic Accreditation

- Program/Discipline/Professional Accrediting Agencies

Important Source: Council for Higher Education Accreditation:
www.chea.org

Trends & Challenges

**Changing
Demographics**

**Emphasis on
Study Abroad**

Costs

**Emphasis on
Outcomes &
Assessment**

**Technology &
Innovation**

