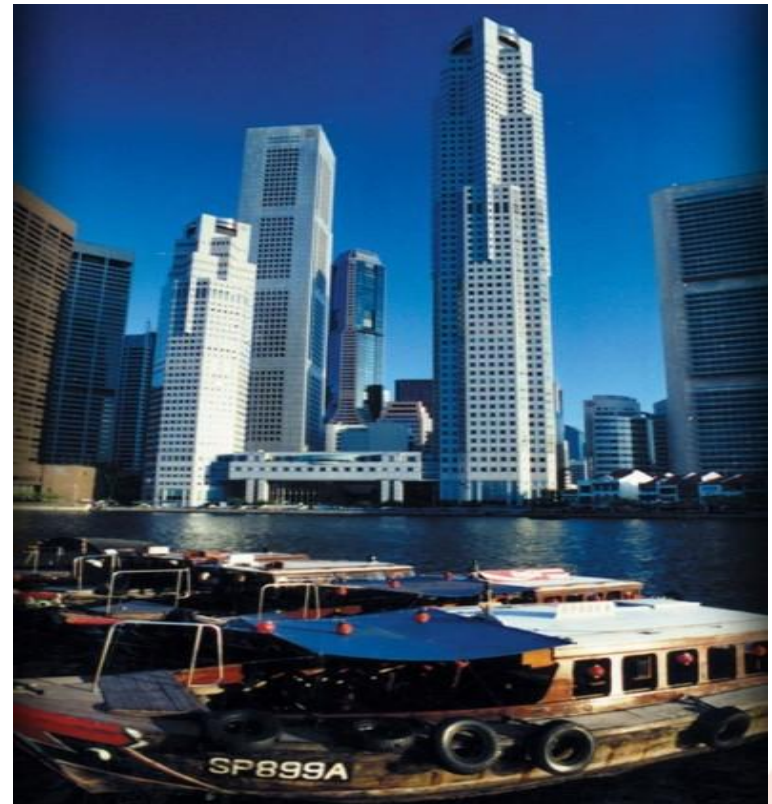


# SINGAPORE



**NANYANG**  
TECHNOLOGICAL  
UNIVERSITY

# 1955 .....Singapore..... 2005



- GDP per capita X 40 in 40 years



# Singapore Today



**world's busiest port/ regional finance center / chewing gum available**



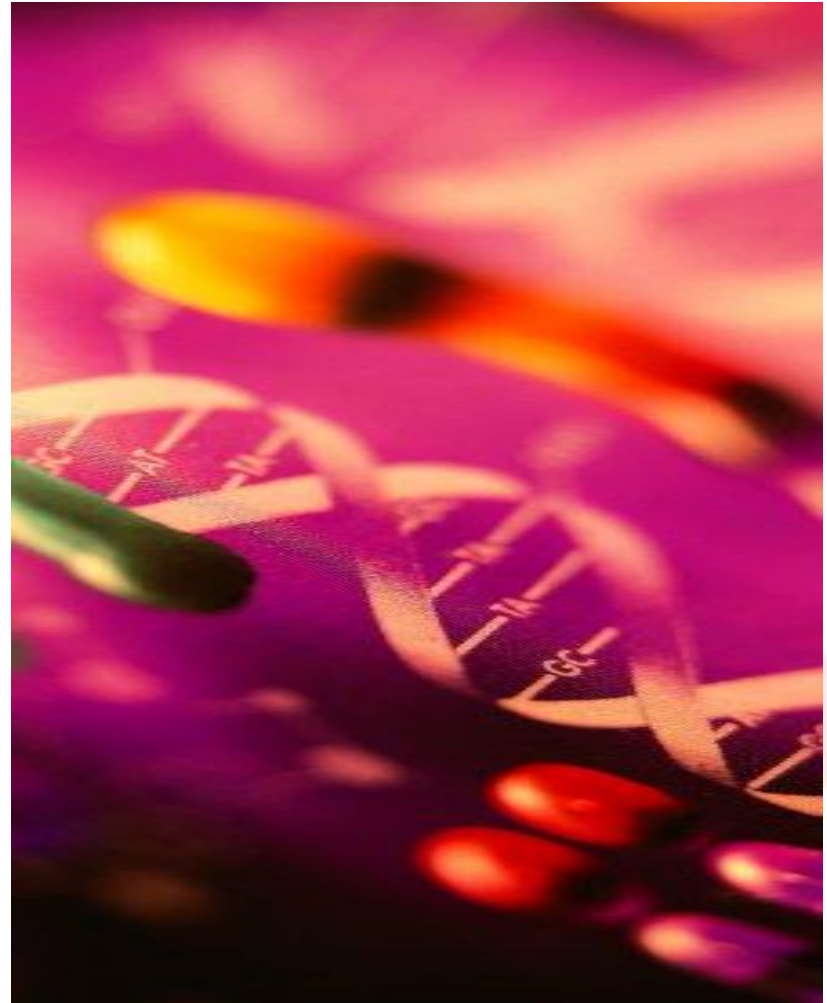
**NANYANG**  
TECHNOLOGICAL  
UNIVERSITY

# ..and .. beyond?

- *Financial Hub of Asia*
- *Health Hub of Asia*
- *Knowledge & Innovation Economy*

# US\$ 9 bn R&D open to world

- Identified strategic areas  
Biomed, Env & Water, Digital Media
- Individual Research Fellowships
- Campus for Rsch Excellence & Tech Enterprise (CREATE)
  - ETH Zurich & MIT





# Goal: 15K Students & 5% GDP by 2015

- US institutions w/ teaching campus:
  - Chicago, Duke, NYU
- US institutions w/ R&D labs or centers:
  - MIT, UIUC, Georgia Tech
- US Programs offered w/ local partners:
  - Cornell – NTU MSc, Carnegie Mellon – NTU MSc



# Observations

- Research, teaching and service *ecosystem to be enhanced*
- Local HEIs *to face more private sector competition* for local students, and *to widen access* ( to ~30% of 18yr. olds)
- Primary and Secondary Schools *to place greater emphasis on humanities , arts and soft-skills*
- Teaching profession *to continue as profession of first choice, offering starting salaries per market index and “extra social security” benefits*
- Private education providers *to be regulated by government guidelines on quality and operations*



